



# MC285 CRM(E) Mini Crane

The MC285 boxes way above its weight with a massive 2.82 ton lifting capacity while measuring just 750mm wide when stowed. Its slim body is able to fit through most doorways allowing access to areas previously inaccessible to standard cranes. The MC285 has proven to be one of the most popular models of mini crane and is used in many varied applications.

### Features at a glance...

- 2.82 Ton Max capacity
- 8.7m Max Working Height
- Slim Body Width (750mm)
- Low Ground Pressure
- Manoeuvrability & Stability
- Programmable Moment Limiter
- Hydrostatic Transmission
- Tilt Sensor/Alarm
- Rubber Tracks
- Hydraulic Disc Brake
- Remote Control
- 2 Year Warranty



### More Images...



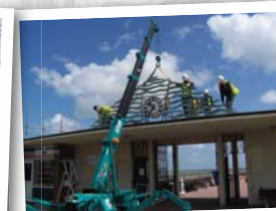
Glazing



Restricted Access



Railway Maintenance



General Lifting



Maintenance Work



... consider the possibilities



**Specifications**

Capacity	Maximum	2.82 t x 1.4m
Working Radius	Maximum	8.205m x 150kg
Lifting Height	Maximum	8.7m x 550kg
Dimensions	MC285 CRM	2715mm x 750mm x 1440mm
	MC285 CRME	3285mm x 750mm x 1440mm
Weight	MC285 CRM	1770kg
	MC285 CRME	1950kg
Hook Speed	Maximum	8m / min. (4 falls, 3rd layer)
Single Line Speed	Maximum	32m / min. (3rd layer)
Hoist Rope	Type	IWRC 6 x Fi (29) Ø 7mm x 48m
Telescopic System	Boom length	2.535m - 8.575m
	Telescoping speed	6.04m / 22 sec.
	Boom type	Fully automatic 5 section pentagonal telescopic boom
Boom Hoist System	Hoist angle / speed	0° - 80° / 14 sec.
Slew System	Slew angle / speed	360° continuous / 1.0 rpm
Outrigger System	Type	4 Multi position box type. Hydraulic cylinders with lock valves.
	Maximum extended dimensions	(Length) 4580mm x (Front) 4530mm x (Rear) 3810mm
Traction System	Drive	Hydrostatic type, stepless forward and reverse
	Travel speed	0 - 2.2 km/h
	Gradability	20°
	Ground length x width	975mm x 200mm (Track dimensions)
Engine	Model	Yanmar 2TNE68-MB
	Type	2 cylinder water cooled diesel
	Rated output	6.57 Kw / 2600 rpm
	Starting method	Electric
	Fuel tank capacity	Diesel / 12L
Electric Motor (Optional)	Type	Fully enclosed fan cooled motor
	Size	5.5 Kw 4P 380V
Standard Equipment	Working light, hour-meter, 4-fall hook block, black rubber tracks, moment limiter, hydraulic safety valves, level, wire rope latch, machine body inclination alarm, EMO switch, working status lamp, overwind protection and cable remote control.	
Optional Equipment	White rubber tracks, single fall hook, two fall hook, searcher hook and radio remote control.	

**Total rated load Outriggers at Maximum position**

2.53m/4.075m boom		5.575m boom		7.075m boom		8.575m boom	
Working radius (m)	Total rated load (kg)	Working radius (m)	Total rated load (kg)	Working radius (m)	Total rated load (kg)	Working radius (m)	Total rated load (kg)
< 1.4	2820	< 3.0	1220	< 3.6	820	< 4.0	550
1.5	2520	3.5	970	4.0	740	4.5	400
2.0	1920	4.0	780	4.5	580	5.0	340
2.5	1570	4.5	630	5.0	480	5.5	300
3.0	1220	5.0	530	5.5	430	6.0	270
3.5	970	5.205	530	6.0	380	6.5	230
3.705	920			6.5	350	7.0	200
				6.705	330	7.5	180
						8.0	150
						8.205	150

**Total rated load Outriggers at any other position**

2.53m/4.075m boom		5.575m boom		7.075m boom		8.575m boom	
Working radius (m)	Total rated load (kg)	Working radius (m)	Total rated load (kg)	Working radius (m)	Total rated load (kg)	Working radius (m)	Total rated load (kg)
< 1.5	1720	< 3.0	510	< 3.6	400	< 4.0	330
2.0	1070	3.5	410	4.0	330	4.5	280
2.5	630	4.0	330	4.5	280	5.0	230
3.0	520	4.5	280	5.0	230	5.5	180
3.5	430	5.0	230	5.5	180	6.0	160
3.705	350	5.205	200	6.0	160	6.5	150
				6.5	150	7.0	100
				6.705	140	7.5	80
						8.0	70
						8.205	60

**Maximum Reach Below Ground Level**

Four Fall	Two Fall	Single Fall
10.10m	20.20m	40.40m

**Dimensions**

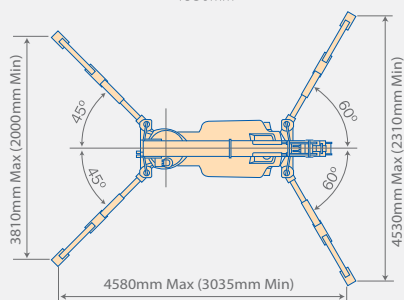
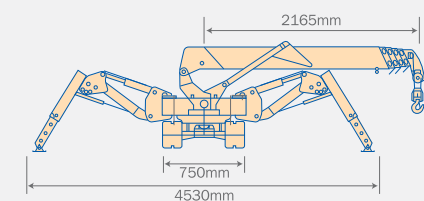
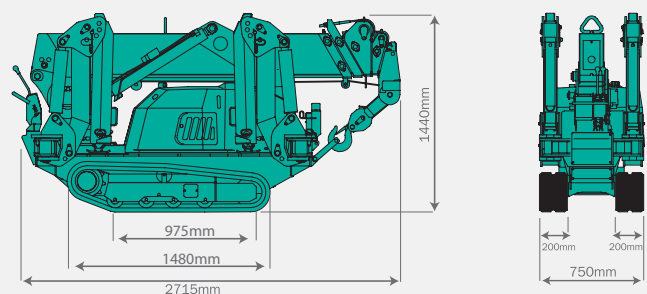
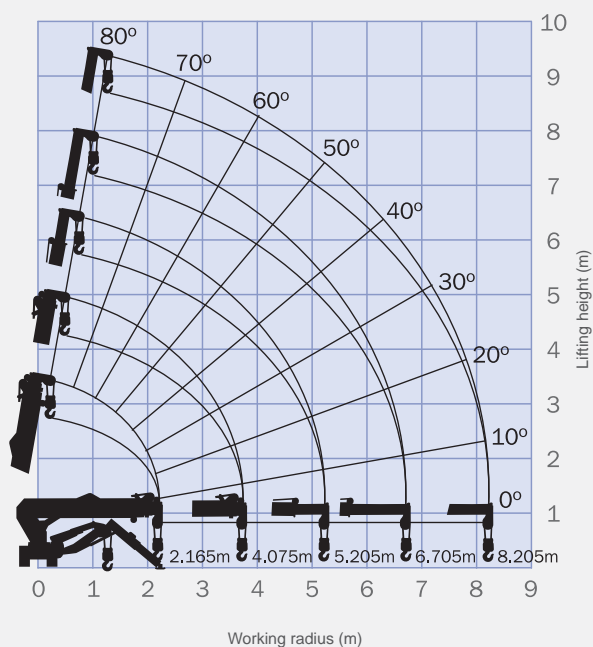


Diagram shows outriggers at maximum position

**Working Range Diagram**



The Working Range Chart does not take into account boom deflection under load.